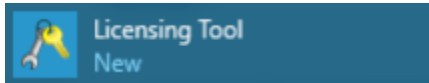
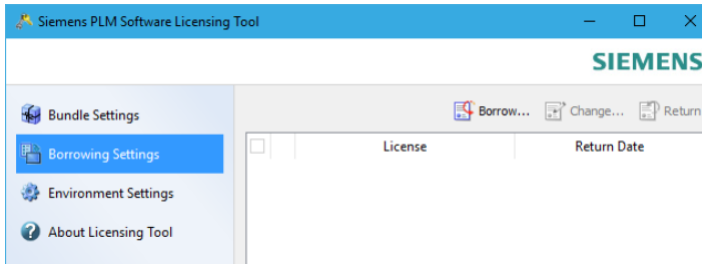


License Borrowing Guide for NX

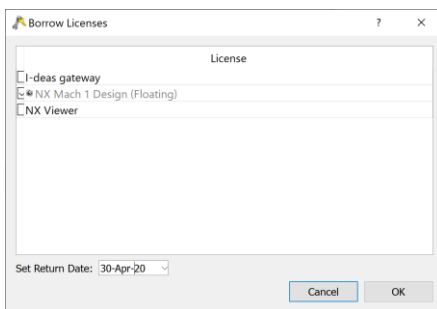
Step 1: Open the Start Menu  and locate Licensing Tool under Siemens



Step 2: Under the Borrowing Settings tab, click Borrow....

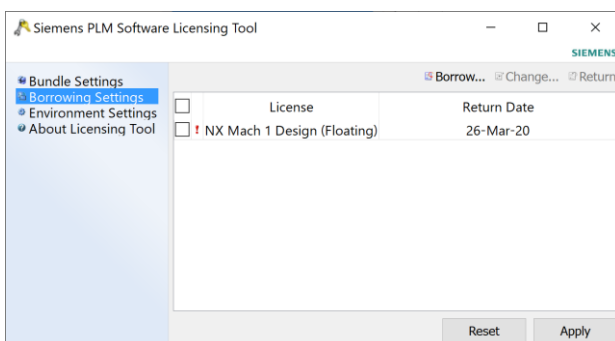


Step 3: Check features license and fill in the length of time you want to borrow the license for. Then click OK.

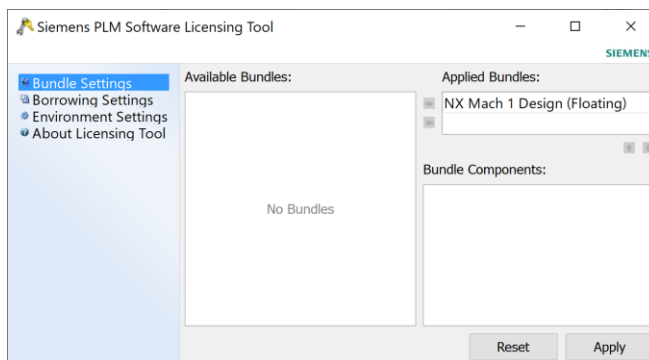
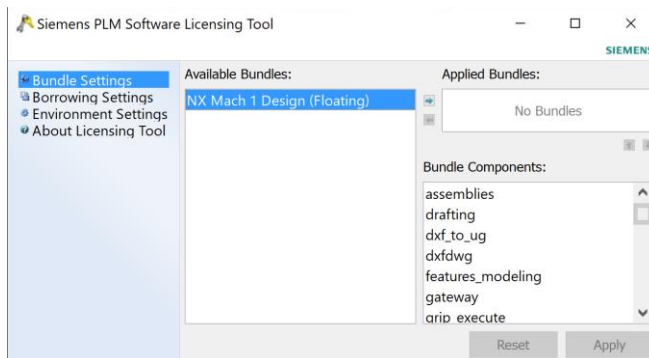


Note: Licenses are limited to a 90-day maximum borrow period. You can re-borrow the license for an additional 90 days by returning to company network and repeating these steps.

Step 4: Click Apply to borrow the licenses. Note that it may take a few minutes for this process to finish.



Step 5: Under the Bundle Settings tab select the features you borrow and click the arrow to move the bundles to the Applied Bundle section.



Step 6: License borrowing complete. You should now be able to use NX while off-company for the duration of the borrowed license period.